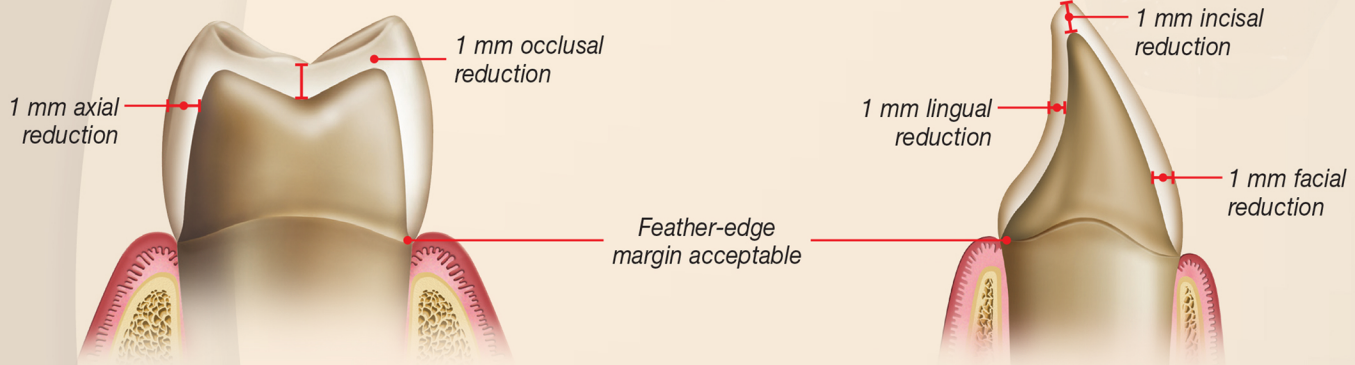


## Indications

BruxZir Solid Zirconia is indicated for crowns, bridges, veneers, inlays and onlays. It is an esthetic alternative to PFM metal occlusal/lingual or full-cast restorations and ideal for restorations requiring extra durability such as crowns under partials or screw-retained implant crowns. The chip-proof durability of BruxZir restorations also makes them ideal for bruxers who have broken natural teeth or previous PFM restorations. BruxZir restorations are also ideal for patients lacking the preparation space for a PFM.

## Preparation Requirements

- Shoulder preparation not needed, feather edge is OK. It is a conservative preparation similar to full-cast gold, so any preparation with at least 0.5 mm of occlusal space is accepted.
- Minimum occlusal reduction of 0.5 mm; 1 mm is ideal.



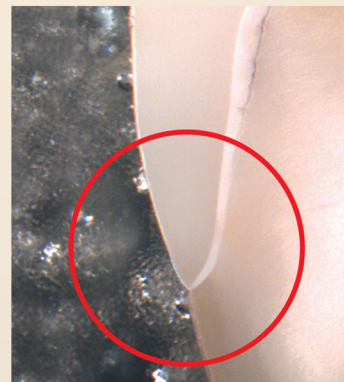
These illustrations show an ideal 1 mm reduction for an anterior or posterior BruxZir crown with feather-edge margins. BruxZir does fine at 1.5 or 2.0 mm as well, but this amount of reduction is not always possible. Maintaining 1 mm of BruxZir thickness allows you to safely adjust the crown if necessary when checking the occlusion. While BruxZir can be milled as thin as 0.5 mm, it cannot be adjusted at this thickness without the risk of breakage. With a BruxZir crown at 0.5 mm thickness with high occlusion, consider adjusting the opposing tooth.

## Typical Prep with PFM Crown



This image represents the typical PFM prep we receive with a conservative feather-edge margin. When a PFM is fabricated for this prep, there is a bulky 1 mm margin on the PFM that catches on the explorer. Even if the margin is sealed, the emergence profile is unacceptable.

## Typical Prep with BruxZir Crown



This image represents the typical PFM prep we receive with a BruxZir crown in place. Because it is a monolithic crown and can be milled to a feather edge, there is no bulk of material, or "speed bump," at the margin. Dentists tell us their explorer cannot detect where the tooth ends and the BruxZir crown begins.

## Cementation Recommendations

- Ceramir® Crown & Bridge (Doxa Dental; Newport Beach, Calif.) or a resin-reinforced glass ionomer cement such as RelyX™ Luting Cement (3M ESPE; St. Paul, Minn.) or GC Fuji Plus™ (GC America; Alsip, Ill.) with Z-Prime Plus or Monobond Plus
- For short or over-tapered preparations, use a resin cement such as RelyX™ Unicem (3M ESPE) or Panavia™ F2.0 (Kuraray; New York, N.Y.) with Z-Prime Plus or Monobond Plus